



Alaska is the new vending machine for **frozen products** with **Nesty** patented dispensing system without spirals which allows to sell different kind of products: packaged ice creams, gelato boxes, frozen prepared dishes and other frozen food. Alaska is perfect for shopping malls, shops, offices, as well as for outdoor installations. Thanks to its particular insulation and thermal barrier, Alaska constantly maintains the temperature of **-25°C** even during the hottest summer periods.

The touch screen displays all the products details and descriptions with pictures and videos. The software User Interface is multi-lingual and very user-friendly.

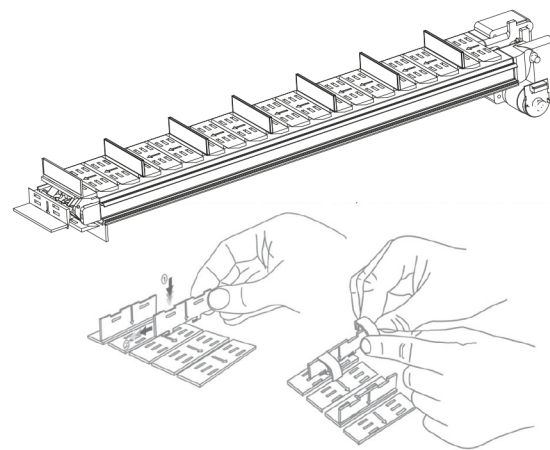
DISPENSING SYSTEM

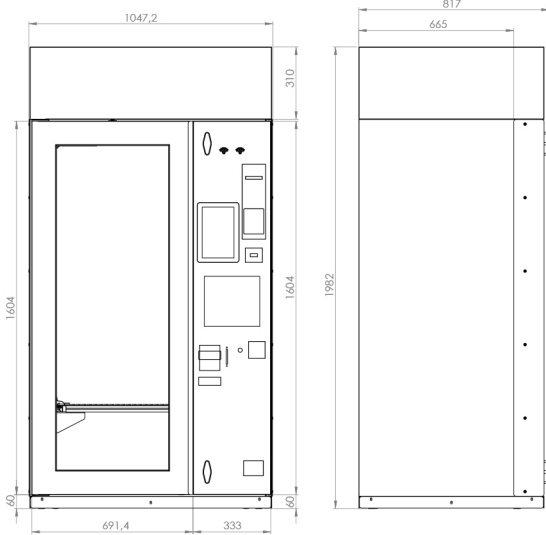
Nesty patented dispensing system provides the maximum flexibility to dispense any kind of product, adapting the space to it.

The system allows to insert separators between the products; the machine has a self-test system to verify the functioning of every lane before dispensing the product.

ALASKA'S DELIVERY

Alaska vending machine's delivery door is on the console side, the product is delivered with a robotic system which takes it from at the floor level and brings it to the delivery area with a lateral movement; a light will flash once the delivery is completed and the customer can withdraw the product. Due to its position at 85cm from the ground it makes the collection easier also to people with disabilities or limited mobility. A thermal barrier separates the stock with the frozen products from the payment and delivery console.

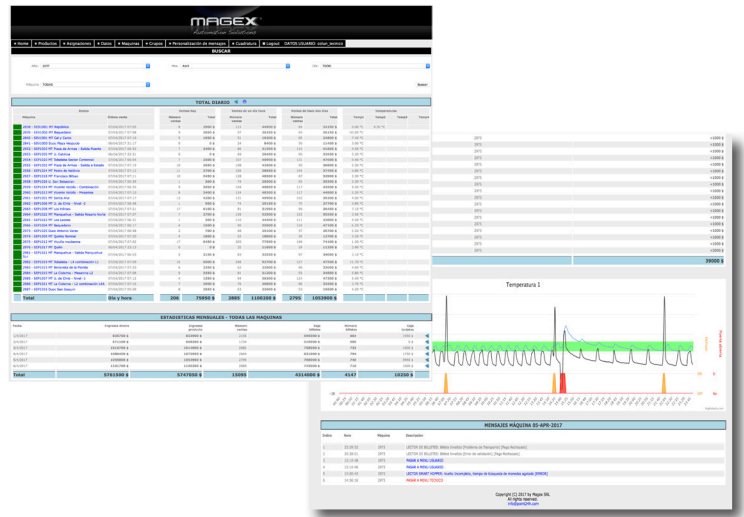




Width	1047,2 mm
Depth	817 mm
Height	1982 mm
Weight (with 6 floors)	330 Kg
Maximum number of floor	8
Maximum selections per floor	6
Lighting type	High luminosity LED (25 W)
Power supply	240/50 Hz 110/60 Hz
Indoor temperature	-25 °C
Energy consumption (with cooling unit on)	900 W

REAL TIME DATA SERVICE

Nesty provides a cloud service to see all the vending machines's data in real time, from laptop and mobile. With the data website is possible to see in real time the sales data, the stock status, coins and banknotes inserted, reboots and functioning, eg. attempted break-in, the internal temperature of the machine and evaporator visible from the display with charts.



TECHNICAL SPECIFICATIONS

- Reinforced retrieval area.
- Shatter proof resistant glass.
- Console with independent opening.
- Frame reinforced with steel.
- 10" HD Monitor.
- Dual core industrial computer.
- Operating system installed in 32 Gb solid disc.
- Isolated door window.
- Led lighting.
- Configuring of modular shelves in height, depth and number of selections.
- Armored locks of the console.
- Self-diagnostic system.
- Electronic multi-control.
- Data and statistics management.
- Lift to collect and delivery the products.
- Temperature control.
- Industrial wheels for mobility.

OPTIONAL

- Banknote reader.
- Banknote reader with change.
- Coins reader with change with tube.
- Coins reader with change smart hopper.
- Lexan protection.
- Lift.
- Camera kit.
- Inserting items via Inventory Code.
- Graphic customization.
- RFID card system.
- Printer.
- Outdoor coverage.
- Credit card reader - ATM.
- Speaker kit.